

AgriLife Information Technology 2009 Roadmap

November 2008

Agenda: IT Forum Jan 14 2009

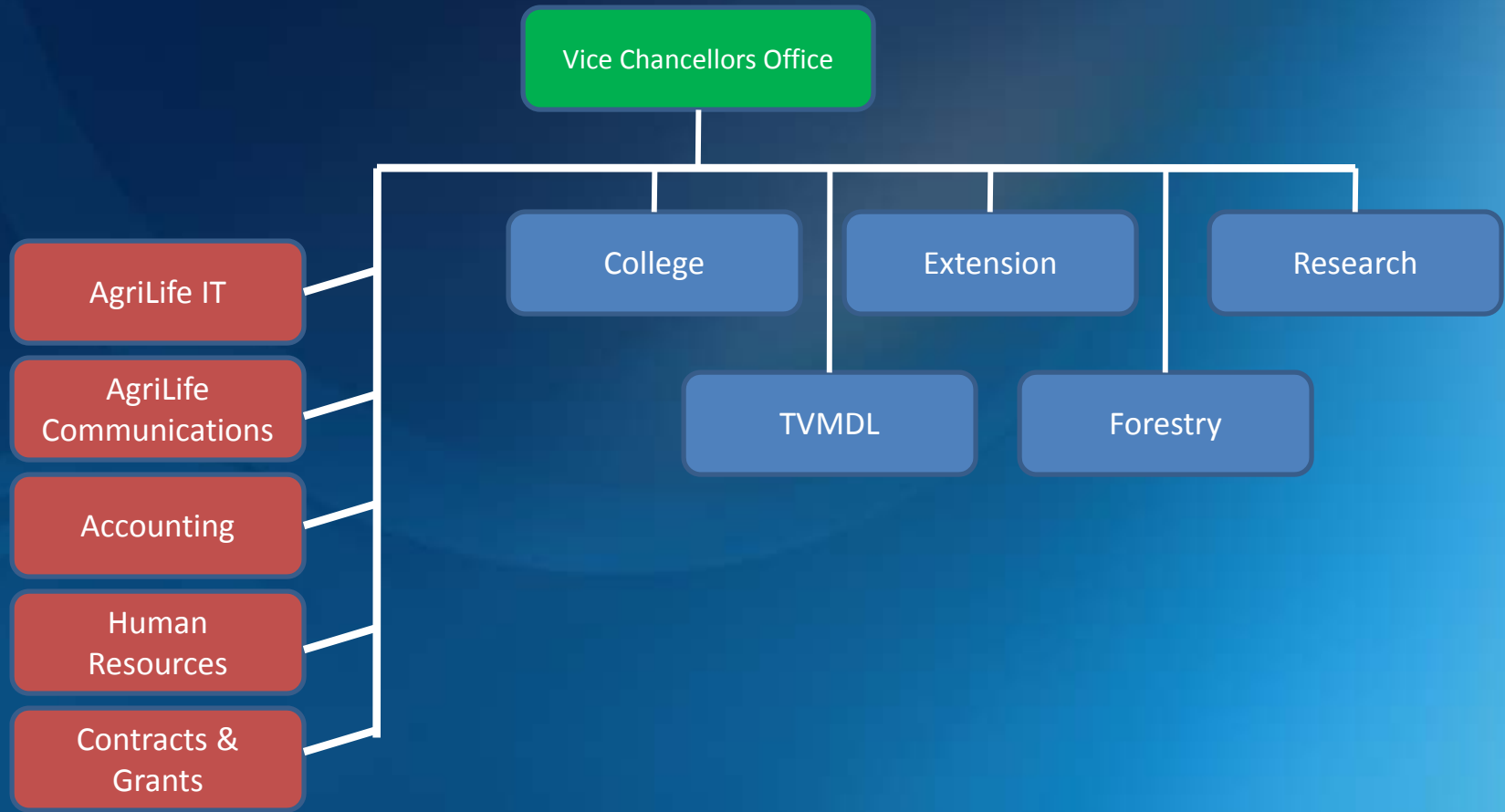
- Introduction
- AgriLife IT Roadmap
- Information & System Security Roadmap
- Q&A

Unit Designation:

Texas A&M

AgriLife Information Technology

Organization Structure



Internal IT

Operational/Resource
Assessment



Vision/Mission/Roadmap
Development



Operational/Resource
Optimization



Information Technology Realignment

Customers

Customer Needs
Assessment / Goals



IT Governance
Development



Budget Model/Strategy
Development



Strategic
Initiatives
&
Current
Operations

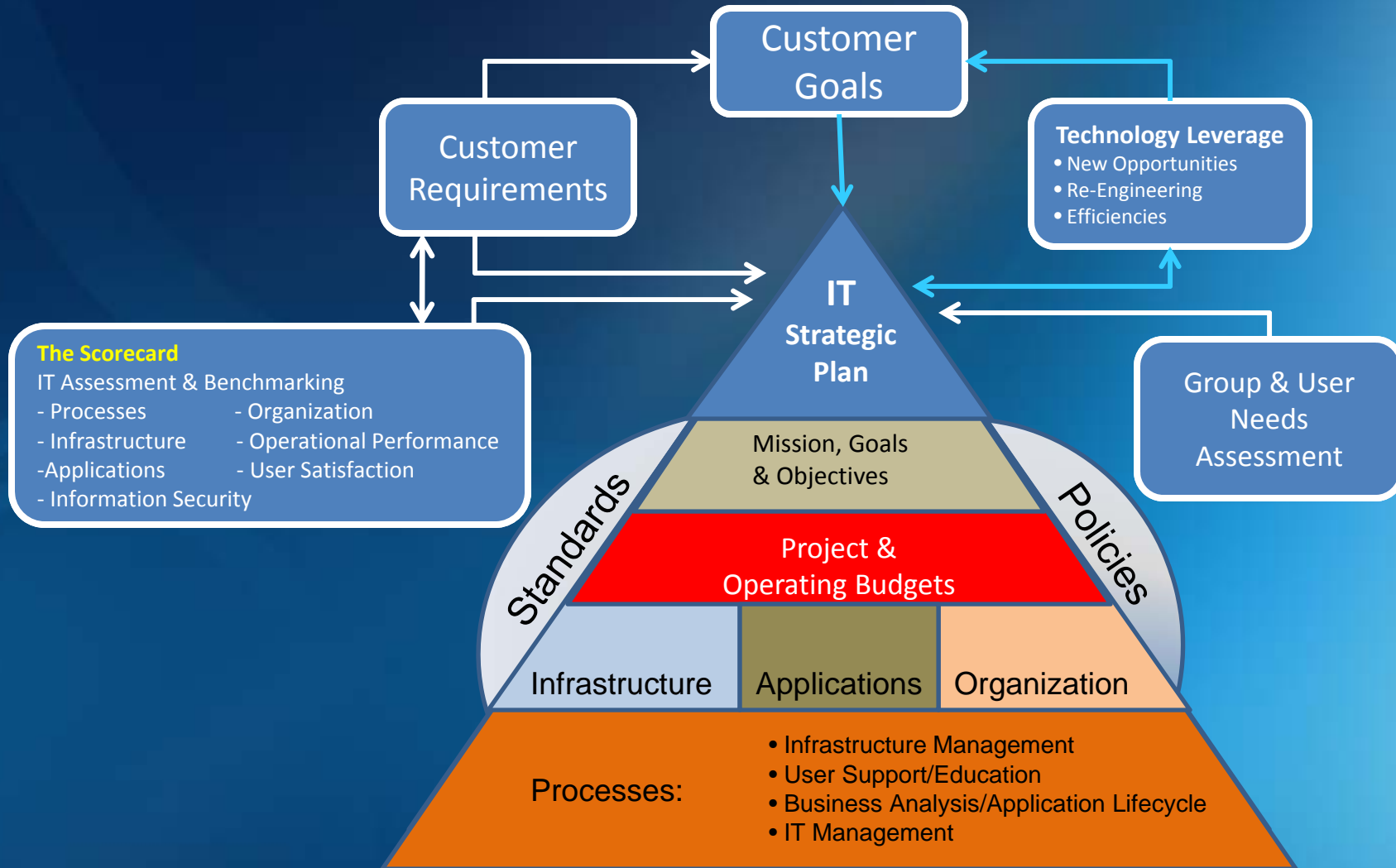


Vision:

AgriLife IT will be a recognized leader in leveraging information technology to stimulate the exchange and creation of knowledge. Information will exist in an integrated environment that fosters an open, collaborative, and unifying culture.

Mission (Purpose, What we do, Values):

To develop and maintain a strong and proactive Information Technology organization that provides leadership for developing and providing quality services and expertise to enhance communication, support customer operations and optimize operational efficiencies via a comprehensive IT strategy.

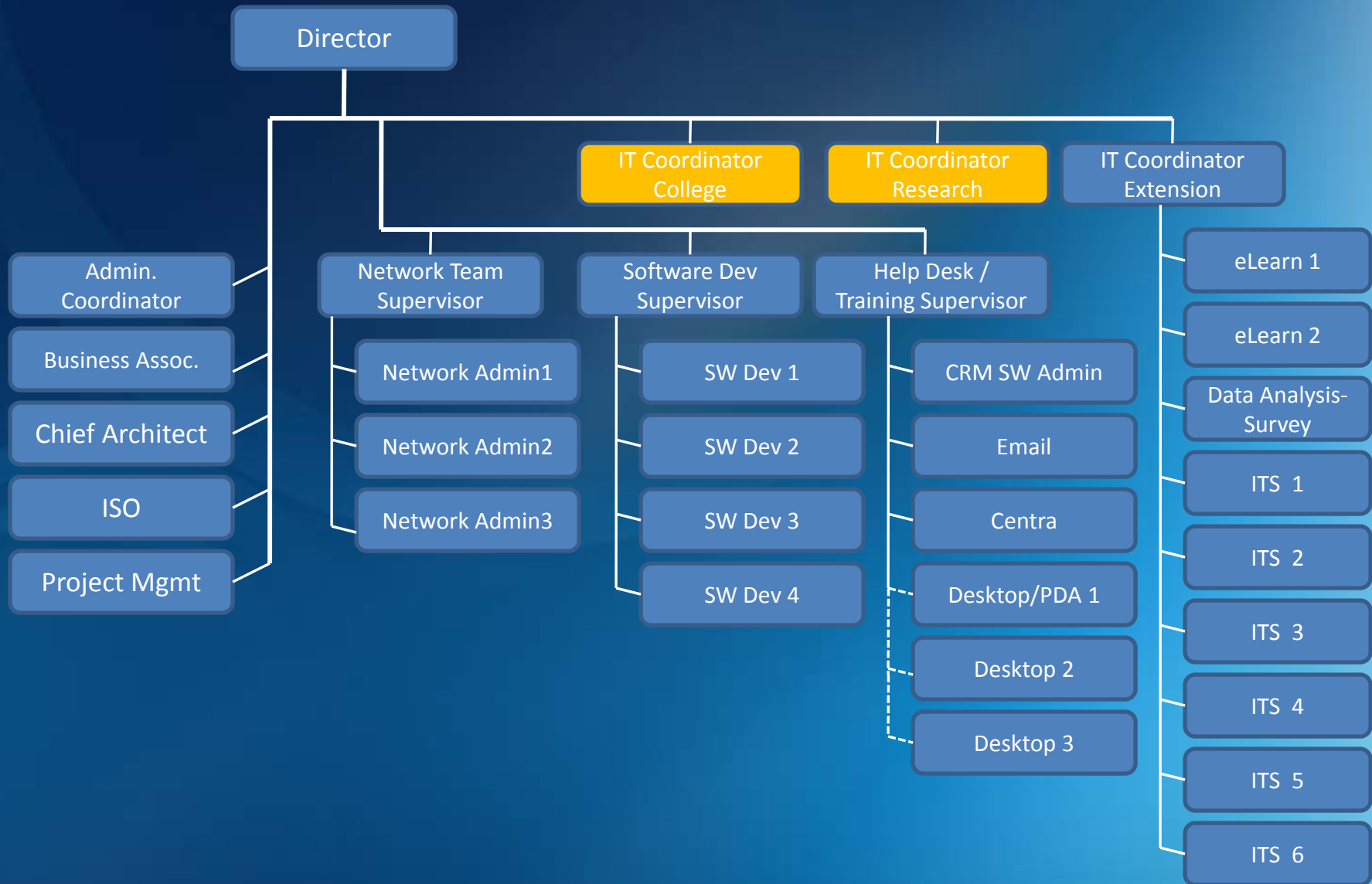


IT Unit Strategy: Focus on the Basics and build a strong foundation.

Creating efficiencies and organization thru:

- Resource Alignment
- Technology Centralization/Standardization/Consolidation
- Process Management
- Customer Management

AgriLife IT Structure



- Audit Response/Prep & Security Management
- CRM / Help Desk / Training
- Email/Calendaring/Contacts
- Enterprise Storage & Management
- Web Hosting Centralization

 **Architecture Standardization / Optimization**

Q & A

AgriLife Information Technology Information/System Security Roadmap

January 2009

Provide the AgriLife community with collaborative support to educate and implement strategic, cost effective and timely security solutions to facilitate security needs for departmental IT resources.

- Security Events are on the Increase
 - “We are expecting a 10 fold increase in malware objects detected in 2008” – Ryan Naraine - Kaspersky Labs
- Security Events cause national attention
 - The New York Times reported that a computer security flaw could allow information to be released for individuals enrolled in Medicare and Medicaid – October 7, 2008
- Security Events are expensive to address
 - Sony was fined 10 million dollars for a breach of Child Privacy – Wired Blog December 11, 2008
- Security Events are time consuming
 - Costs for security breaches are significant. Cost of each lost identity is approximately 150\$.

Implement cost effective solutions and proactive security practices and strategies to the changing security risk.

Provide information and analysis on changing regulations and policies

Perform regular assessments on the overall state of AgriLife IT security

Security Strategic efforts are broken down into four areas:



- Communicating awareness of changes in regulations to state, federal laws and institution policies/procedures, security advisories
- Ongoing education through special seminars, training, and comprehensive communication model for both IT and non-IT resources

INTERNAL (AIT)

- Collaboration of Configuration guidelines based on best practices
- Checklist and review for system and application rollouts and changes.

EXTERNAL

- Management Review Team collaboration on unit IT assessments
- Facilitate University, System or State level penetration/security scans/tests

Audit assistance –

- Audit Preparation - Includes notifying applicable staff/departments of pending audit reviews and ensuring that the staff are adequately prepared.
- Information Security Officer has the responsibility of ensuring previous audit observations are adequately addressed.

Provide information and guidance on changing security landscape by addressing operational awareness

To Include such areas as:

- Disaster Recovery preparation and planning
- Encryption
- Account management
- Patch Management
- Intrusion Detection and Prevention
- Log management
- Application Security Management
- System Change Management

Security Office - Where we can be reached

- The Information Security Office can be contacted at 979-862-7254 or by sending e-mail to j-braden@tamu.edu
- You can view our information resource links at <http://eit.tamu.edu/security.shtml>

General Q & A

- ❖ Email Systems
- ❖ Information Security
- ❖ System Security
- ❖ Workstation Management
- ❖ Policies & Regulations
- ❖ Data Management
- ❖ Networking
- ❖ Virtual Machines and Networking
- ❖ Training
- ❖ Customer Support
- ❖ Wireless Networking
- ❖ Data Management
- ❖ Disaster Recovery
- ❖ Portable Devices
- ❖ Change Management
- ❖ IT Roadmap